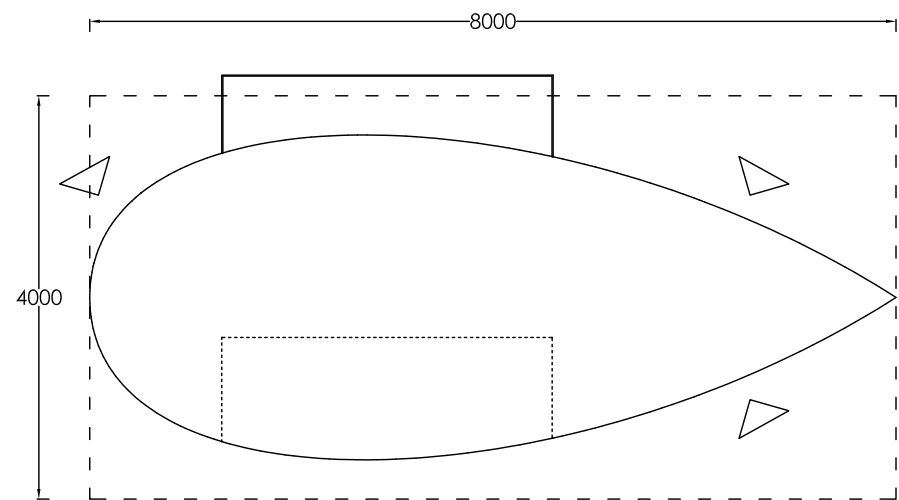
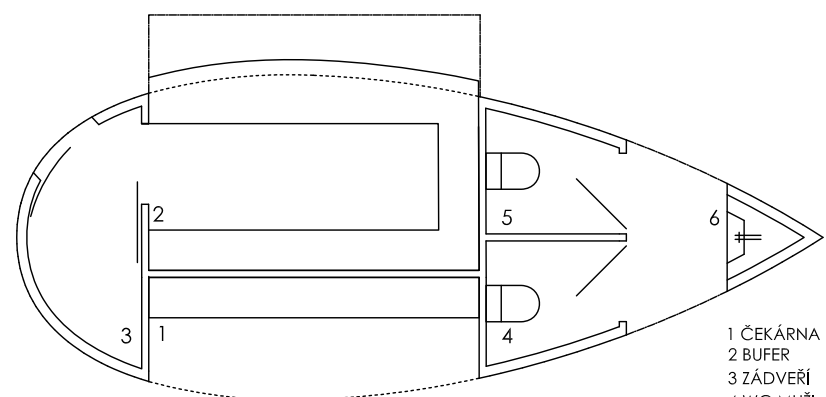


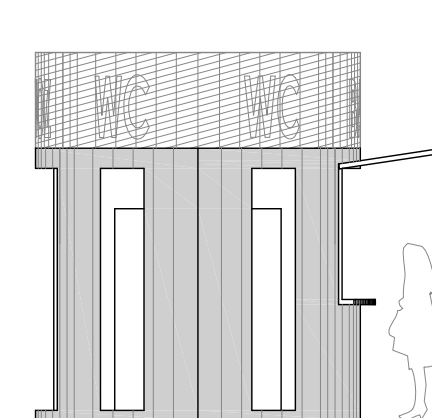
POŘIZOVATEL: <b>Městský úřad Roztoky</b>	
ADRESA: <b>Městský úřad Roztoky</b> Nám 5. května 2, 252 63 Roztoky	
ZPRACOVATEL:  Tomáš Beneš architekt zodpovědný projektant: <b>Ing. arch. Tomáš BENEŠ</b> autorizace ČKA 04210 spolupráce: <b>Ing. arch. Ondřej BARTUŠEK</b>	
ADRESA: <b>Ing. arch. Tomáš Beneš</b> Ve Struhách 13, 160 00 Praha 6 tel.: 608 910 258 email.: tomasbenes@tb-a.cz  <b>Ing. arch. Ondřej Bartůšek</b> Měříčkova 52, 621 00, Brno tel.: 777 806 951 email.: ondrej@bartusek.info	
MÍSTO STAVBY: k. ú. Roztoky - vltavský břeh	
NÁZEV AKCE: <b>Územní studie "Přívoz"</b>	
MĚŘÍTKO:	
DATUM: 05.2016	
ČÁST: <b>VÝROK</b>	
Č.PARÉ:	Č. PŘÍLOHY: <b>B5</b>
<b>VÝKRESY ARCHITEKTONICKÉHO ŘEŠENÍ</b>	



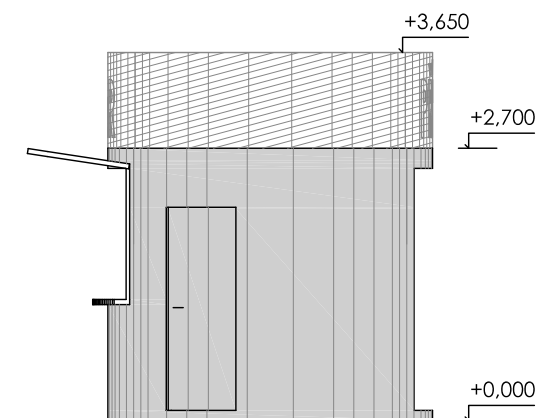
PŮDORYS



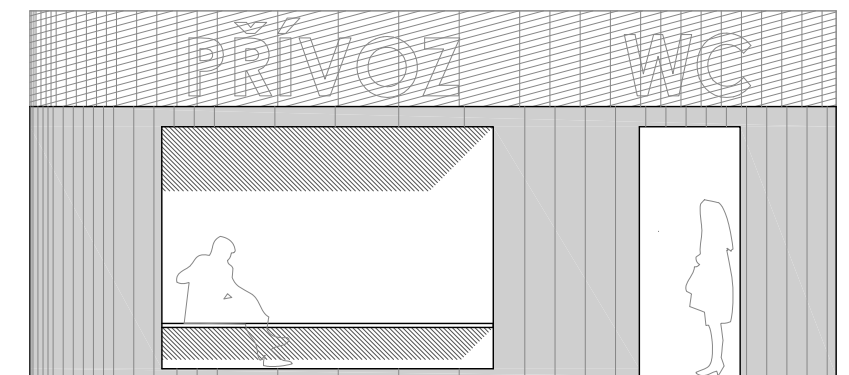
1 ČEKÁRNA  
2 BUFER  
3 ZÁDVEŘÍ  
4 WC MUŽI  
5 WC ŽENY  
6 UMÝVÁRNA  
DISPOZICE



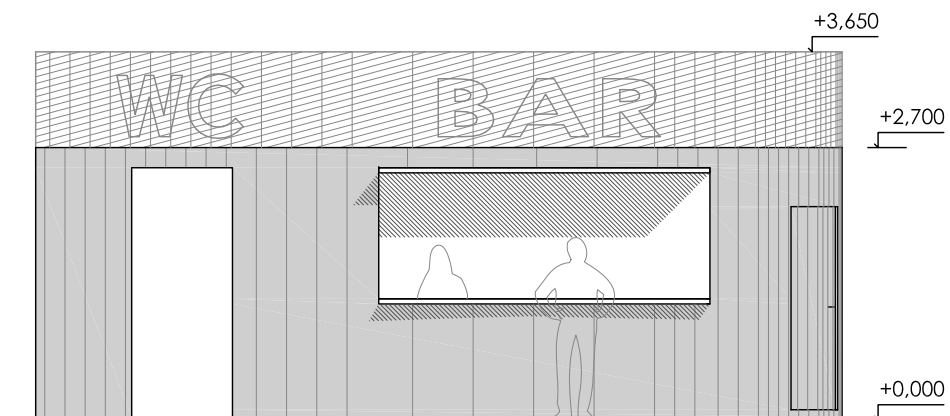
POHLED



POHLED



POHLED

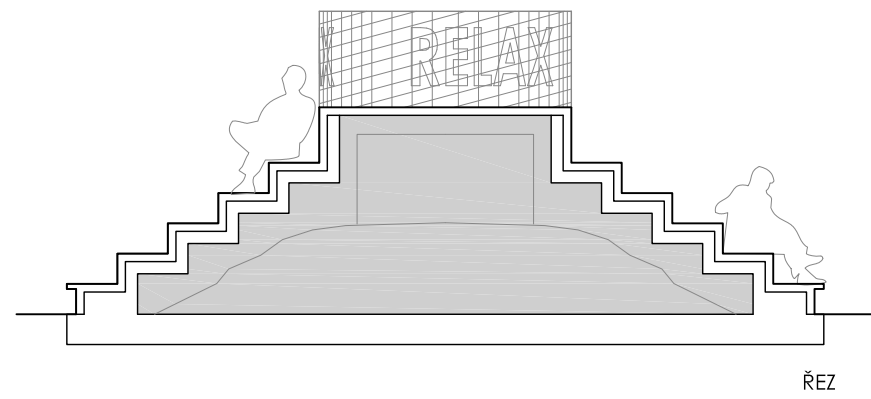
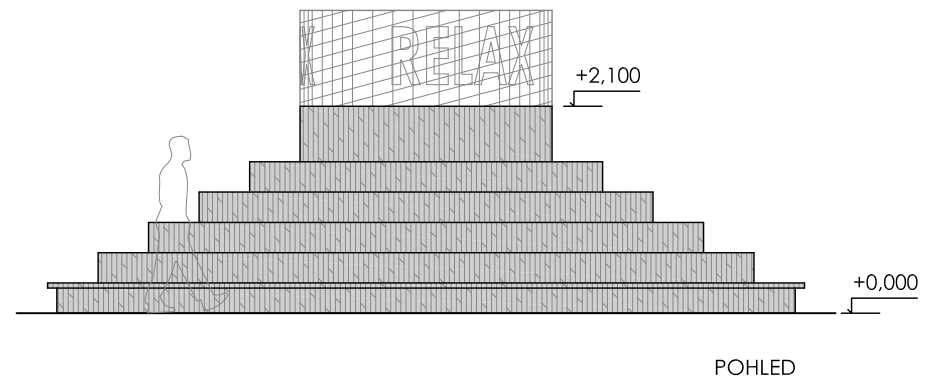


POHLED

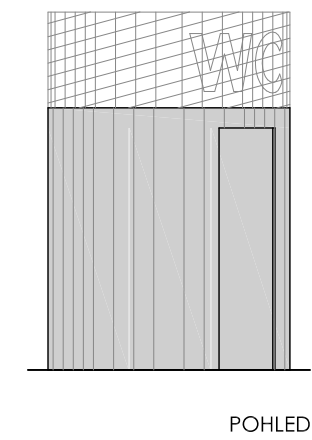
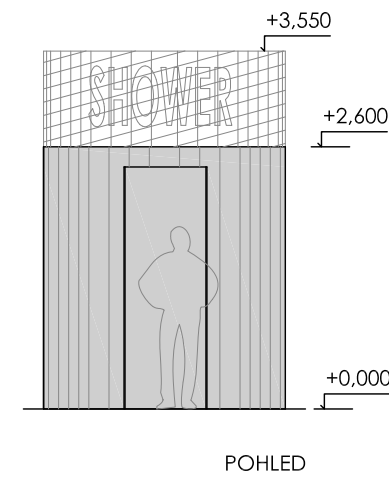
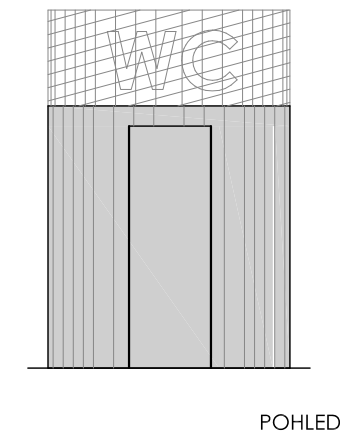
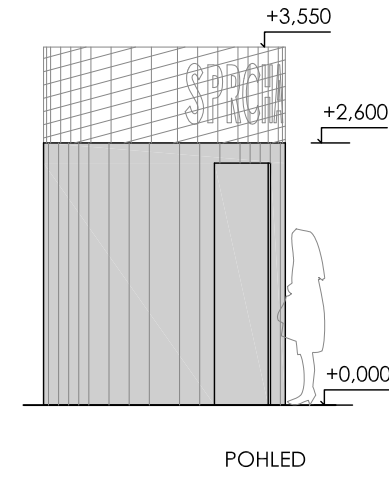
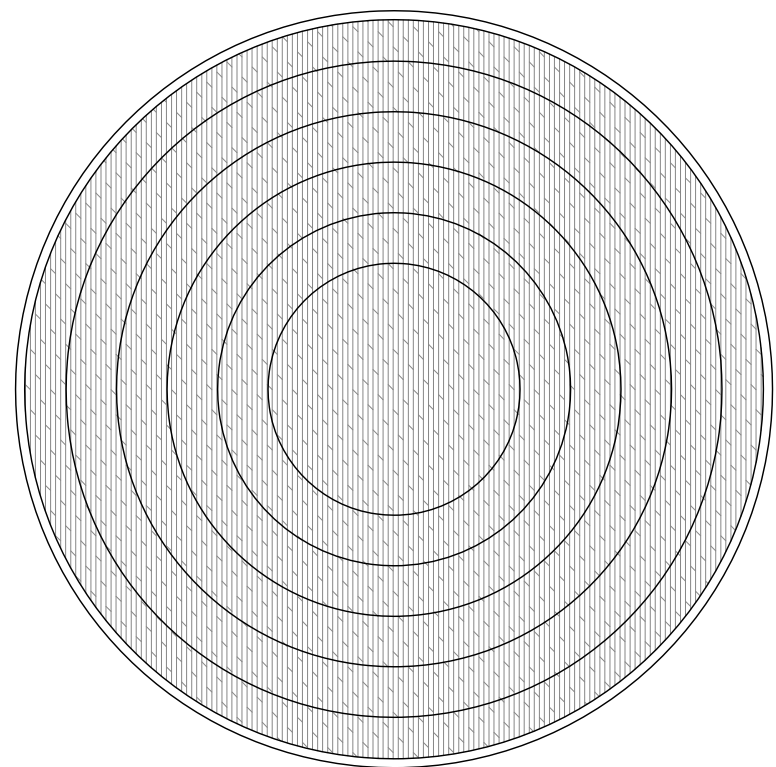
měřítko 1:75

0 1 2 3 4 5

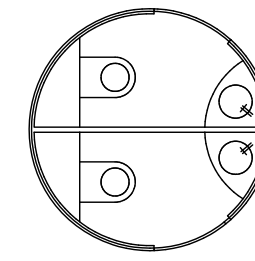
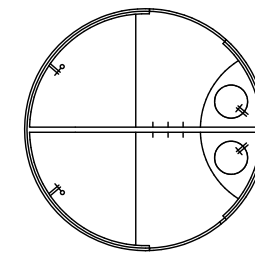
10m



7500



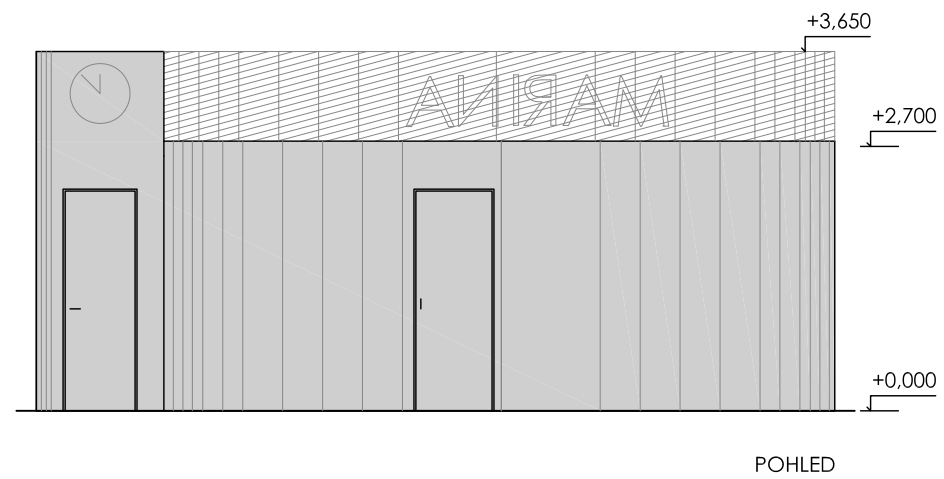
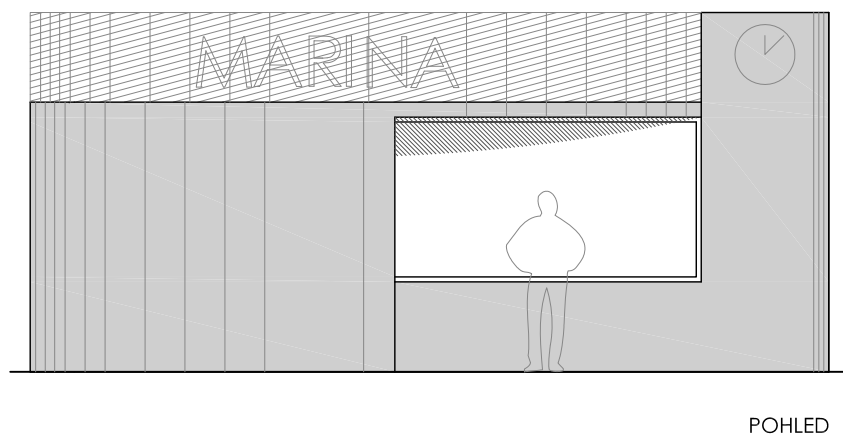
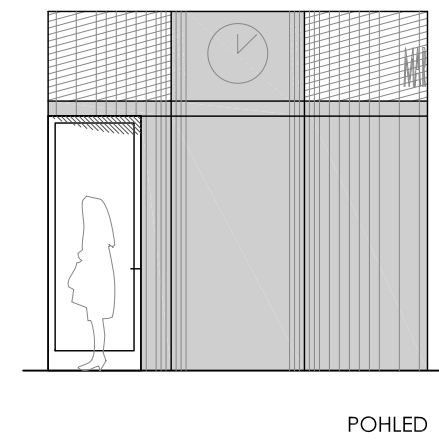
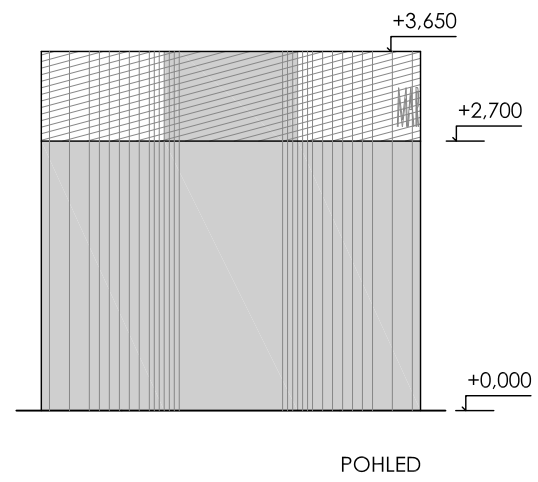
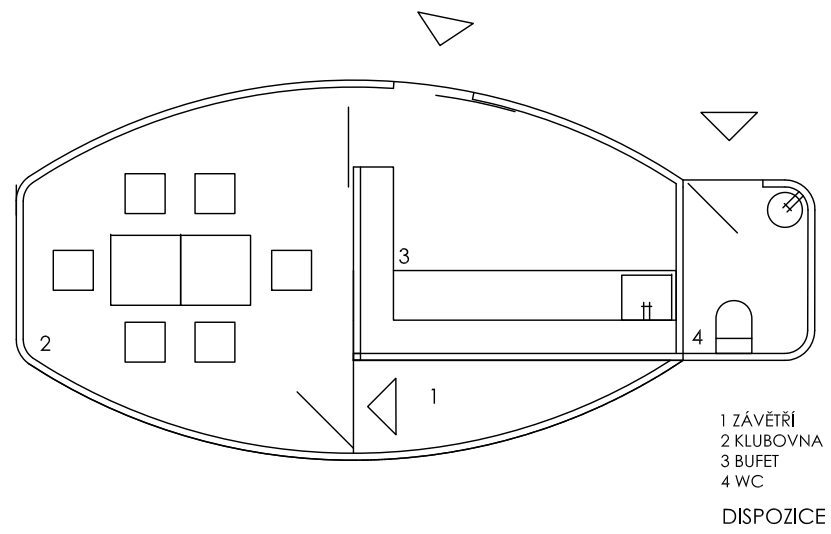
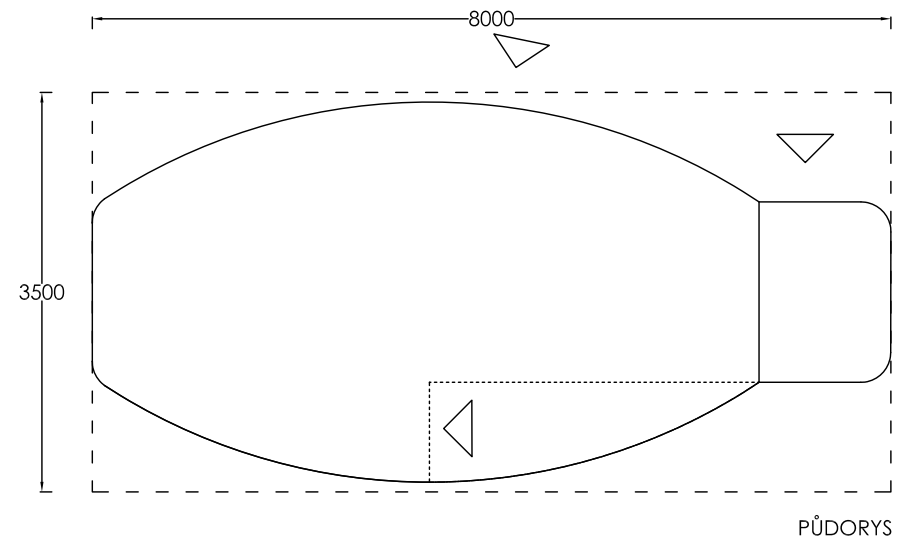
2400



měřítko 1:75

0 1 2 3 4 5

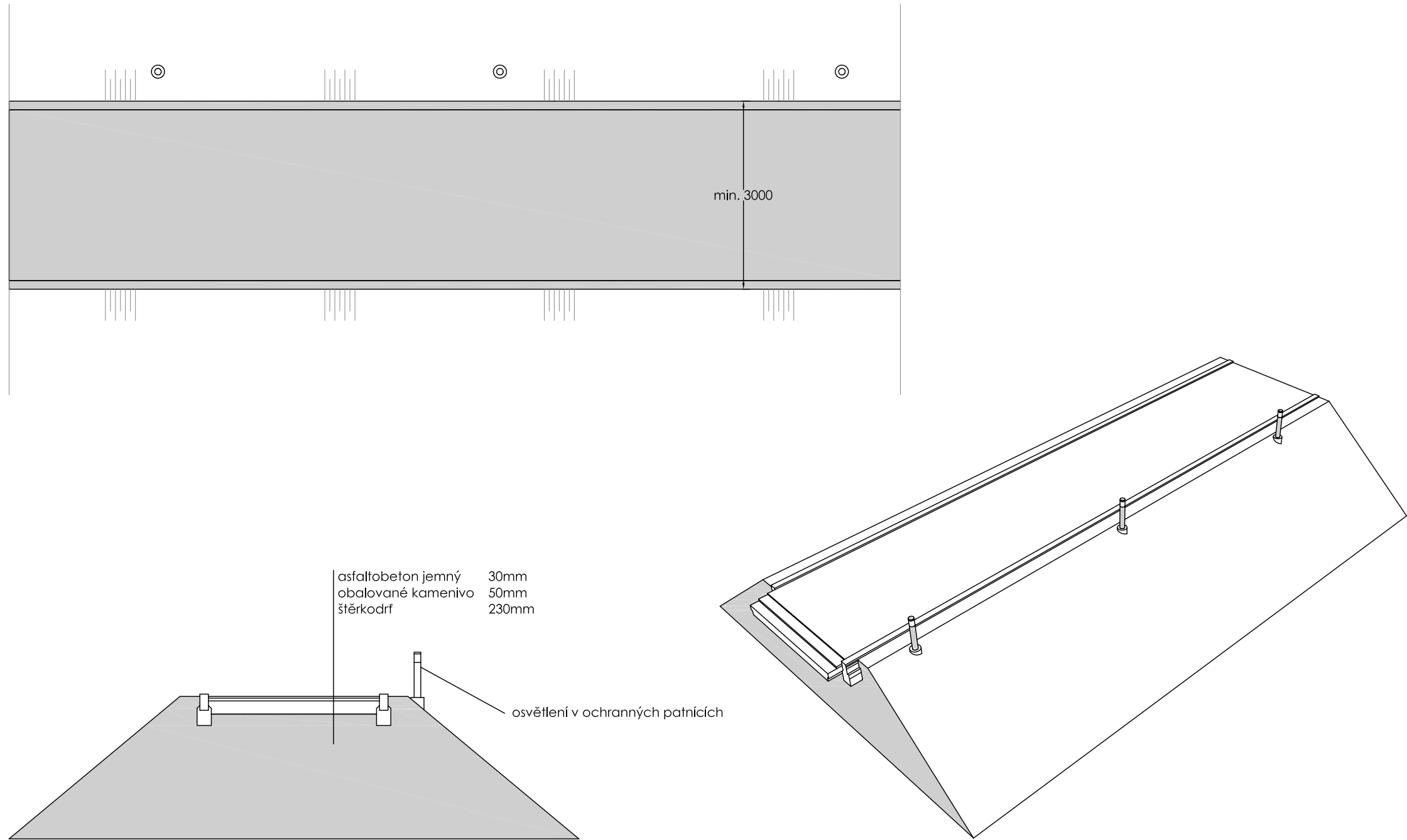
10m



měřítko 1:75



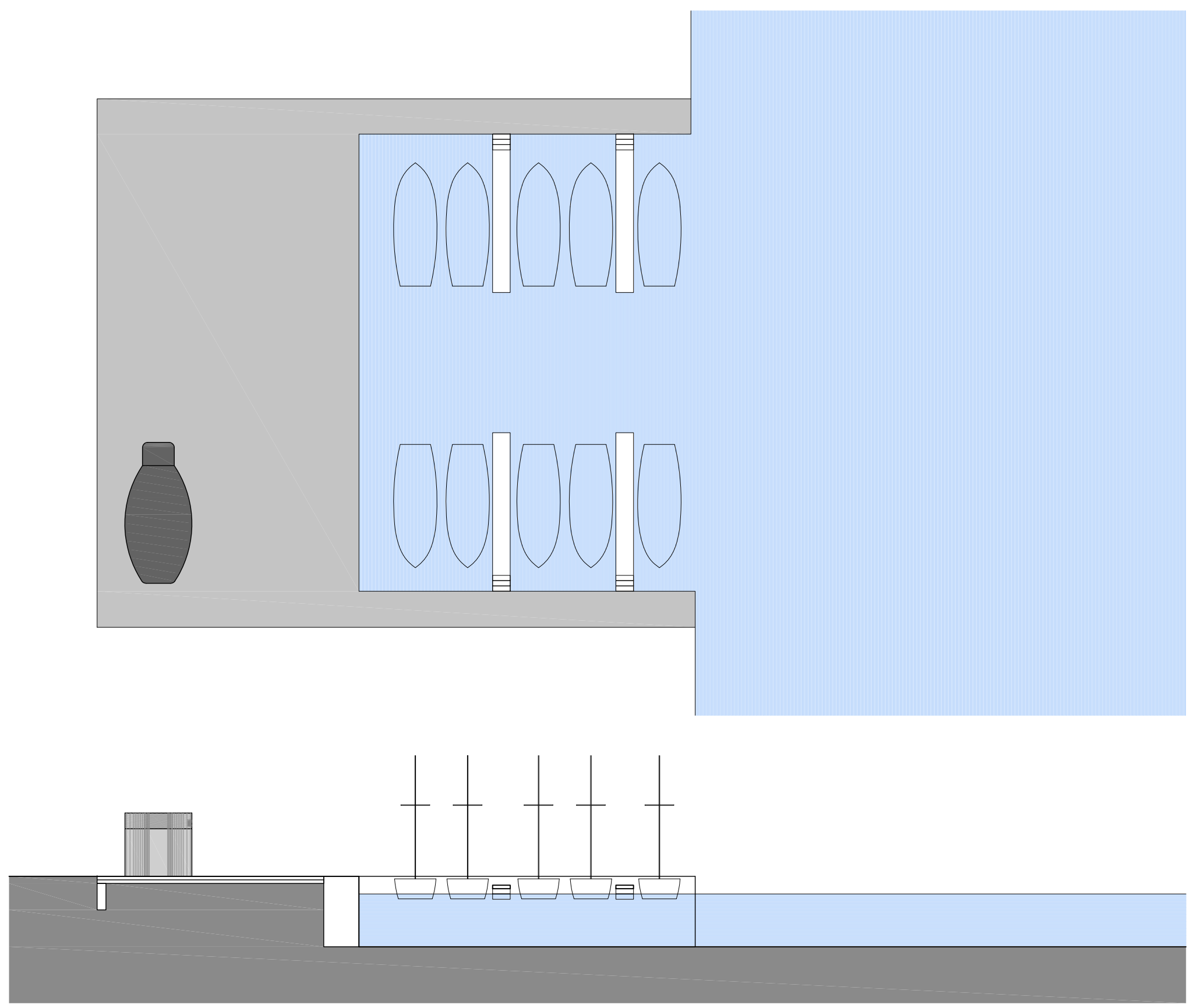
10m



měřítko 1:75

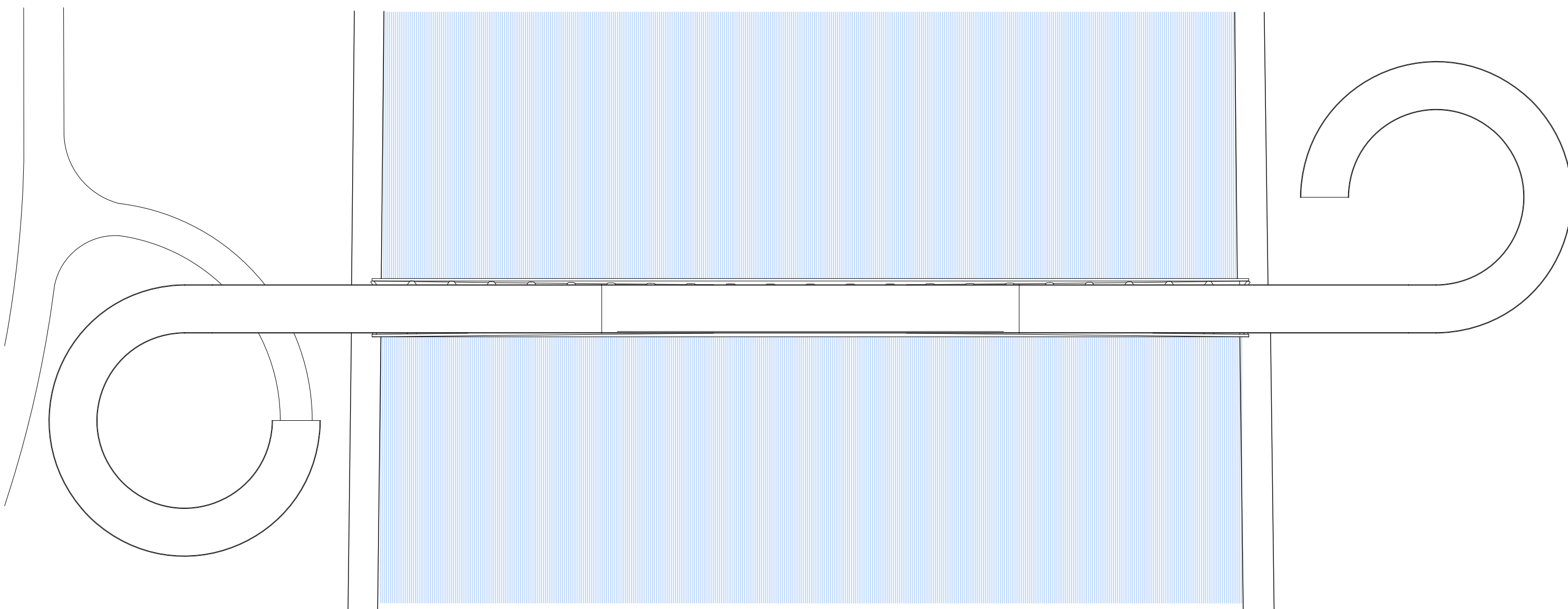
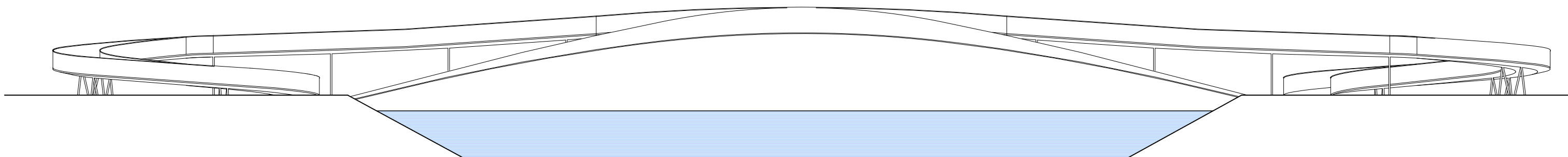
0 1 2 3 4 5

10m



měřítko 1:250





měřítko 1:250

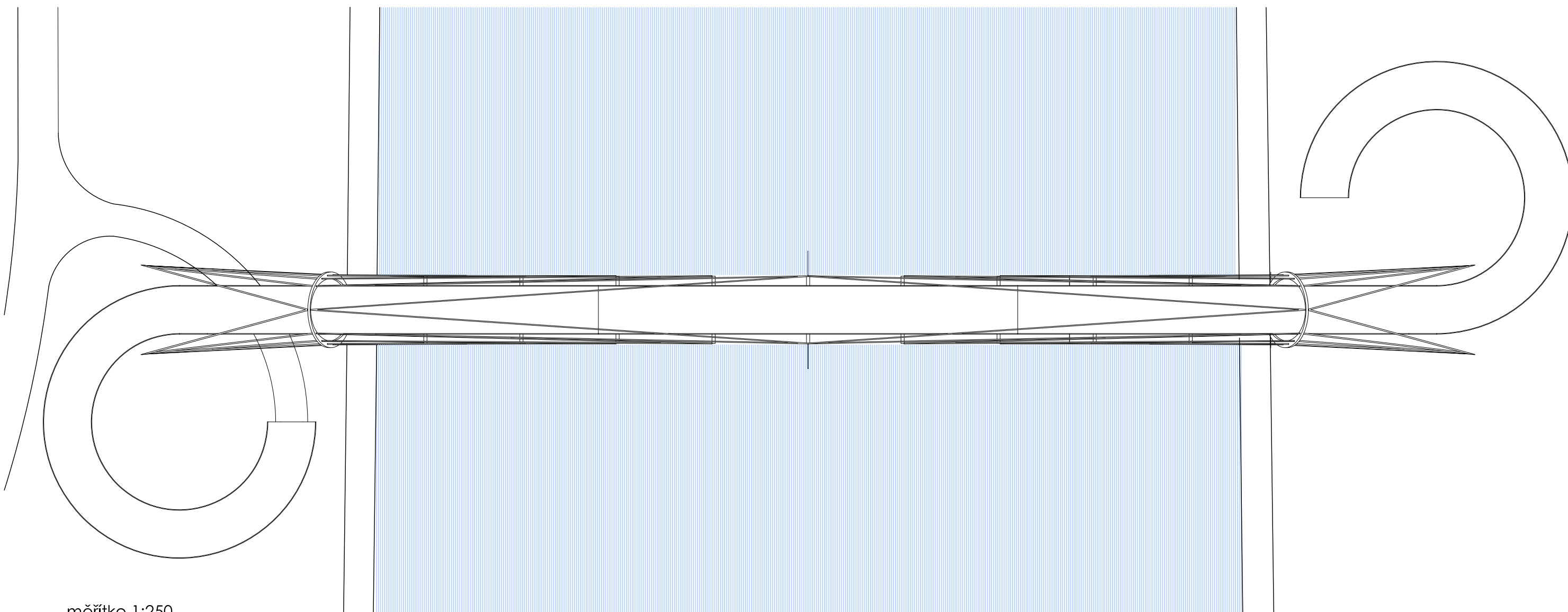
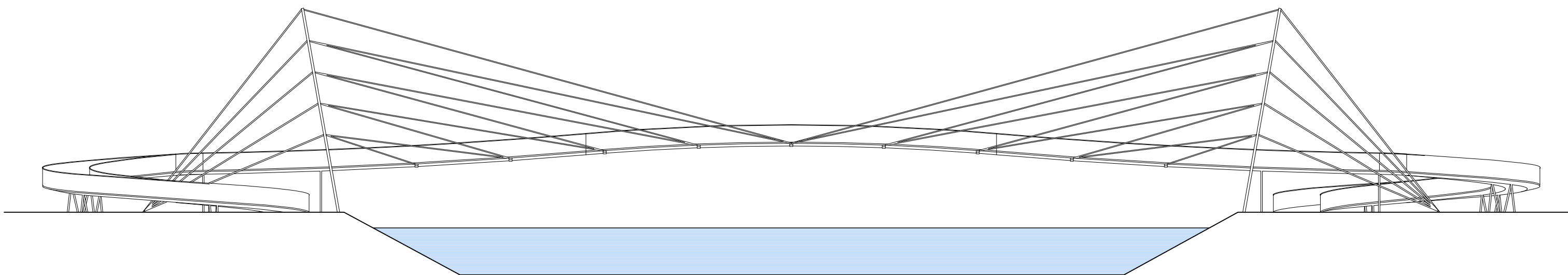
0

5

10

20

30m



měřítko 1:250

0

5

10

20

30m